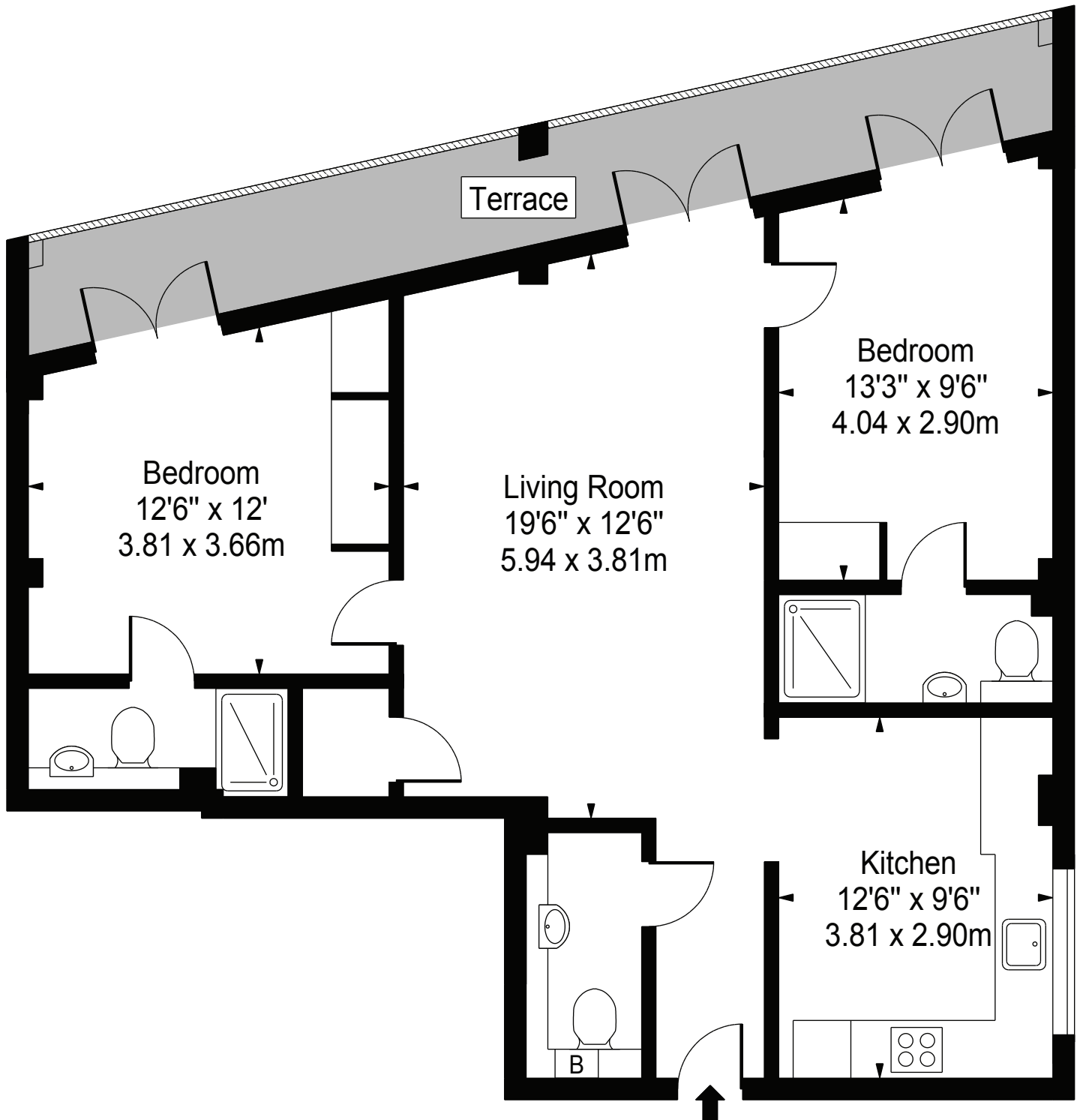


Balham High Road, Balham, SW12 9BP

Approx. Gross Internal Area 829 Sq Ft - 77.02 Sq M



Second Floor

For Illustration Purposes Only - Not To Scale - Floor Plan by interDesign Photography
www.interdesignphotography.com

This floor plan should be used as general outline for guidance only.
All measurements are approximate and for illustration purposes only as defined by the RICS Code of Measuring Practice ©2016.